



## This collage features various industrial components arranged around a central photograph of large white storage silos. The components include several types of valves (gate, globe, ball), actuators, pumps, a filter, a pressure washer, and other mechanical parts, all set against a blue background. The central image shows multiple tall, cylindrical storage tanks with ladders and walkways, typical of a refinery or chemical plant.

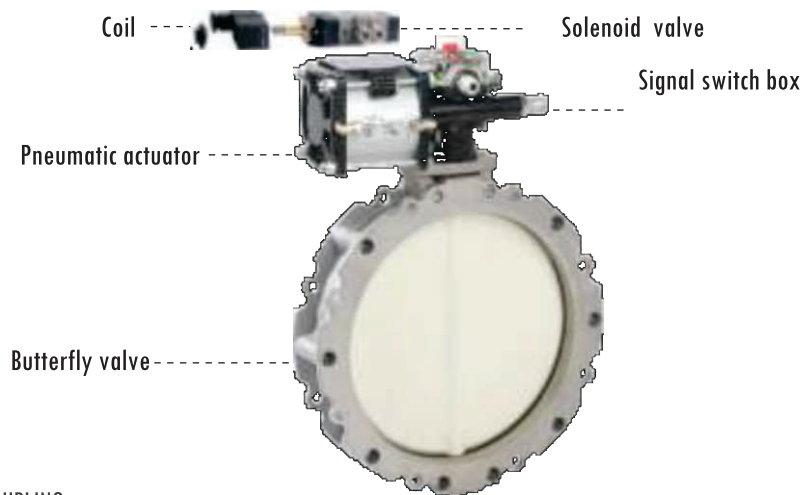
## Bulk Solids Handling Equipment

### Silo Discharge Butterfly Valves

#### ACS Powder pneumatic valve

ACS Butterfly Valves are mainly used silo switch bins, hoppers and equipped with powdered or granular materials. Can be applied to deal with all powdery and granular materials, the use of the material itself gravity valve closure and pneumatic conveying of dry materials.

ACS2FS300GBN/24VDC Is: Double flange connection butterfly valve, diameter 300mm, wear dust-proof valve plate, NBR seal, with solenoid valve coil voltage of 24 VDC, with ACS21 signal feedback.



ACS 1F..GBN



ACS 2F..GBN

#### PNEUMATIC ACTUATOR COUPLING

Path		ACS 100	ACS 150	ACS 200	ACS 250	ACS 300	ACS 350	ACS 400
Mechanism	Under light load	AC 101	AC 101	AC 101	AC 101	AC 101	AC 126	AC 126
Mechanism	Under heavy load	AC 101	AC 101	AC 101	AC 126	AC 126	AC 126T	AC 126T

- 1 - Single flange butterfly valve for sleeve connection
- 2 - Double flange butterfly valve
- NO - Detachable open type single flange (double flange with single flange)

#### COUPLING OF MANUAL LEVER

Path	ACS*F 100	ACS*F 150	ACS*F 200	ACS*F 250	ACS*F 300	ACS*F 400
Mechanism	ML4	ML4	ML4	ML4	ML4	ML3B

- 1 - Single flange butterfly valve for sleeve connection
- 2 - Double flange butterfly valve
- NO - Detachable open type single flange (double flange with single flange)

N.B.. ACTUATOR CHOICE DEPENDS APPLICATION AND TYPE OF MATERIAL, WITH LUMPY, GRANULAR AND FIBROUS PRODUCTS, IT IS ADVISABLE TO USE A CASTIRON OR AISI 304 DISC.

Dimensions in mm

Body uses lightweight high pressure die casting aluminum alloy the disc plate material for milling of cast iron, with wear-resistant rubber ring seal structure is very suitable for all kinds of powder and granular materials Applications, and especially for the strong wear of the material



### How To Order

ACS F	300	S	N
Model	Path	Discs	Sealing Ring
ACS F = DOUBLE FLANGE WITH SINGLE FLANGE ACS 1F = SINGLE FLANGE ACS2F = DOUBLE FLANGE	DN 100 – 400	S : Molecular Material GB : Nodular cast iron A : Stainless Steel L : Aluminum alloy	N : NBR E : EPDM S : SI I : FDA

### ACS F GBN

- 1 Yoke-Casting Aluminium Alloy
- 2 Shaft Sleeve-Nylon
- 3 Valve Body-Casting Aluminium Alloy
- 4 GB Series Disc-Nodular cast iron GS 400/12
- 5 Series Sealing Ring-NBR Rubber
- 6 Shaft Sleeve-Nylon
- 7 Valve Body-Casting Aluminium Alloy

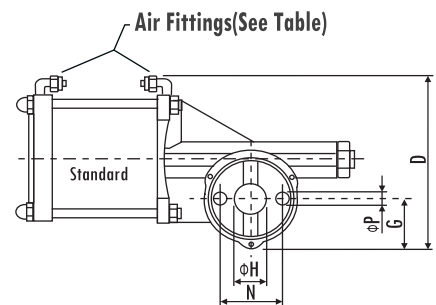
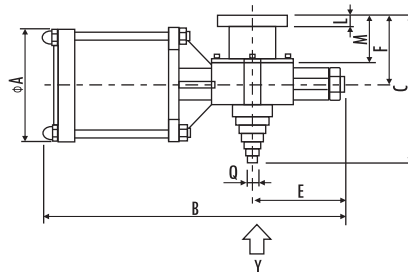
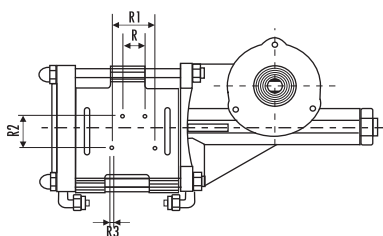


## Valve Actuators

### Electropneumatic Actuator- AC-Series AC

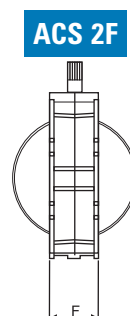
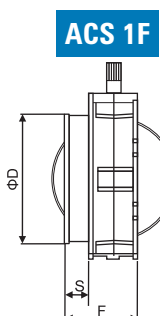
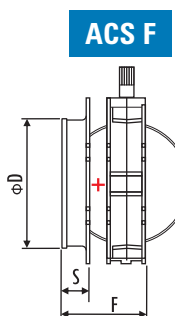
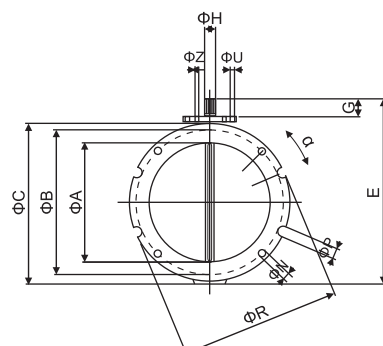
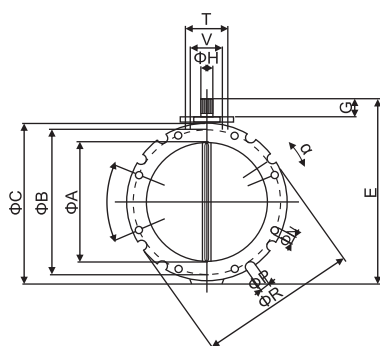
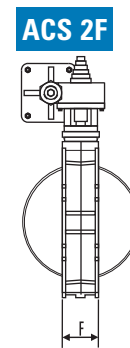
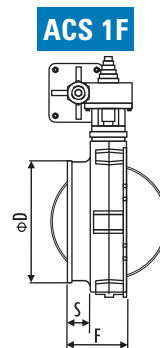
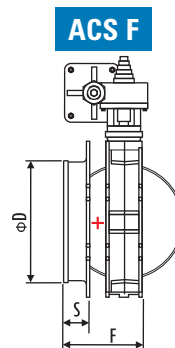
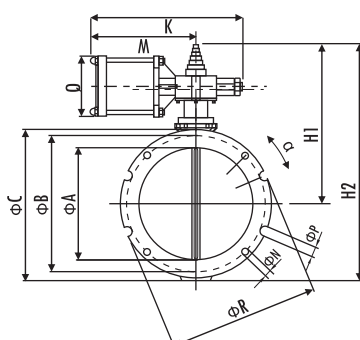
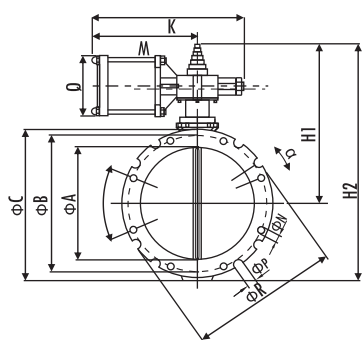


AC



TYPE	Φ A	B	C	D	E	F	G	Φ H DIN 5482	L	M	N	Φ P	Q	R	R1	R2	R3	Φ Thread	Φ Hose	Air Consumption per Cycle at 6 bar(Nl)	Operation time in sec.at 6 bar	Kg
AC 063	70	265	130	140	85	60	33	22X19	10	47	50	11	12	18	36	26	M4	1/8	8x6	2.0(x2)	0.8	2.8
AC 101	106	260	130	150	85	60	33	22X19	10	47	50	11	12	18	36	26	M4	1/8	8x6	4.4(x2)	0.8	3.3
AC 126	125	450	180	215	170	100	65	28x25	16	52	80	13	12	22	60	40	M4	1/4	8x6	6.3(x2)	0.5	9.5

Dimensions in mm



### Single Flange Butterfly Valve For Sleeve Connection

TYPE	Φ A	Φ B	Φ C	Φ D	E	F	G	Φ H DIN5482	N Drilling	P External grooves	Φ R	α	S	T	U	V	Z	kg
ACS1F	95	180	220	105	250	117	35	22x19	N°4x φ 14	N°4x φ 20	220	22°30	40	80	M12	50	M10	6
ACS1F	150	200	228	163	290	117	35	22x19	N°4x φ 14	N°4x φ 20	228	22°30	40	80	M12	50	M10	7
ACS1F	200	250	278	213	340	117	35	22x19	N°4x φ 14	N°4x φ 20	278	22°30	40	80	M12	50	M10	9
ACS1F	250	300	328	263	390	117	35	22x19	N°8x φ 14	N°8x φ 20	325	11°15	40	80	M12	50	M10	11
ACS1F	300	350	378	313	440	117	35	22x19	N°8x φ 14	N°16x φ 20	375	5°41	40	80	M12	50	M10	15

### Double Flange Butterfly Valve

TYPE	Φ A	Φ B	Φ C	E	F	G	Φ H DIN5482	N Drilling	P External grooves	Φ R	α	T	U	V	Z	kg
ACS2F	95	180	220	250	77	35	22x19	N°4x φ 14	N°4x φ 20	220	22°30	80	M12	50	M10	6
ACS2F	150	200	228	290	77	35	22x19	N°4x φ 14	N°4x φ 20	228	22°30	80	M12	50	M10	6
ACS2F	200	250	278	340	77	35	22x19	N°4x φ 14	N°4x φ 20	278	22°30	80	M12	50	M10	7.5
ACS2F	250	300	328	390	77	35	22x19	N°8x φ 14	N°8x φ 20	325	11°15	80	M12	50	M10	9.5
ACS2F	300	350	378	440	77	35	22x19	N°8x φ 14	N°16x φ 20	375	5°41	80	M12	50	M10	13
ACS2F	400	470	530	580	85	50	28x25	N°8x φ 14	N°16x φ 20	530	4°30	80	M12	-	-	30

Dimensions in mm

### Switch Box - ACS-Series ACS 21

Micro signal switch box suitable actuator in type AC, opening and closing of the output signal of the feedback

#### Switch box

### ACS 21

#### Performance & Technical Features - Benefits

- High strength of PC shell, switch position can be clearly identified indicator
- Protection grade: IP67/NEMA4&4X (standard) IP68 (option)
- Device: can adjust the positioning cam cam position signal
- Mechanical switch: 2SPDT
- Contact: 250VAC/16A 400VAC/10A
- Single-wire interface:PG9
- Terminal: 5points(0.08-2.5mm<sup>2</sup>)



#### Micro-Switch Box

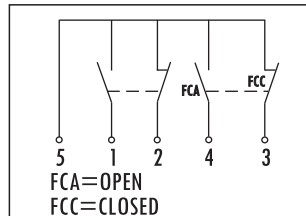
IP67

0-10A 400V

0-16A 250V

For AC

ACS 21



320g

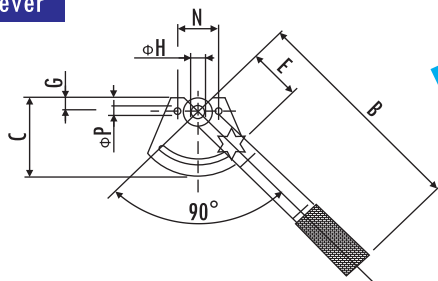
## Signalling Systems

### Manual Lever ML Series ML

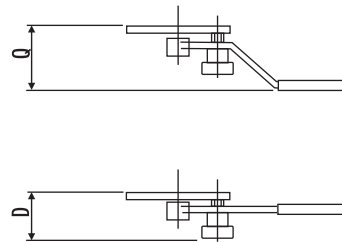
ML handle driver suitable for control of ACS type butterfly valve, ball valve of VSS type and DVA type bidirectional shunt valve opening and closing

#### Manual Lever

ML



ML



#### CONNECTION SIZE

TYPE	B	C	D	E	G	H DIN 5482	N	P	Q	Kg
ML4	300	104		72	14	22x19	50	10.5	115	1.3

#### COUPLING OF MANUAL LEVER

ACS*F 100	ACS*F 150	ACS*F 200	ACS*F 250	ACS*F 300
ML4	ML4	ML4	ML4	ML4

Dimensions in mm

## Bulk Solids Handling Equipment

### Pressure Relief Valve

#### Pressure Relief Valve ACSP - Series ACSP273

ACSP Pressure Relief Valves are the last resort when abnormal pressure conditions endanger the silo structure. This is why sudden excess or suction pressure inside the silo must be dealt with instantaneously. Even though ideally a Pressure Relief Valve should never have to go into action, it must be efficient and reliable if needed.

#### Pressure Relief Valve

##### Performance & Technical Features

- Carbon steel body (ACSP2731C / ACSP3751C) painted RAL 7001 or 304 stainless steel body (ACSP2732C / ACSP 3752C)
- Weather protection cover in stainless steel for all versions
- Body diameter = 273 / 356mm (10" / 14")
- Air volume up to 7,000m<sup>3</sup>/h (4,120 cfm) for ACSP273 or 13,000m<sup>3</sup>/h (7,650 cfm) for ACSP375
- Equipment for inductive signalling sensors
- All standard versions preset for an activation negative pressure of - 0.005 bar (0.07 psi) and an excess pressure of + 0.05 bar (0.72 psi)
- In case of particular customer requirements calibration can be changed by means of a special spring kits



#### How To Order

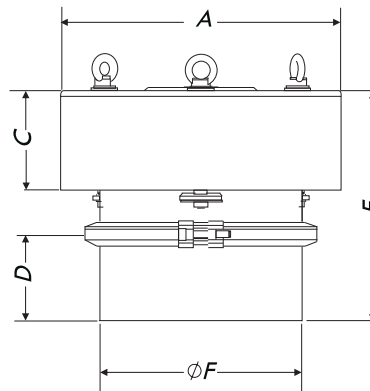
ACSP Type	273 Body diameter	1 body	B
Pressure Relief Valves	273 mm	0 = Carbon steel body 1 = Carbon steel body and Stainless steel 2 = 304 Stainless steel body 3 = 316 Stainless steel body	B

#### Pressure Relief Valve

Calibration by manufacturer

Pressure  
500 mm H<sub>2</sub>O

Negative Pressure  
-20mm H<sub>2</sub>O



ACSP

Pressure  
280 → 1000 mm H<sub>2</sub>O \*

Negative Pressure  
-20 → -120 mm H<sub>2</sub>O \*

#### CONNECTION SIZE

Type	A	B	C	D	E	ΦF	kg
ACSP2730B	380	-	125	120	325	273	12

Dimensions in mm

## Rotary Paddle Level Meter-ACSRPLM-Series    ACSRPLM

ACSRPLM Bin Level Indicators have been designed for electric signalling by rotary action of minimum or maximum material level inside bins, hoppers or silos.



# RPLM

## Operating Conditions

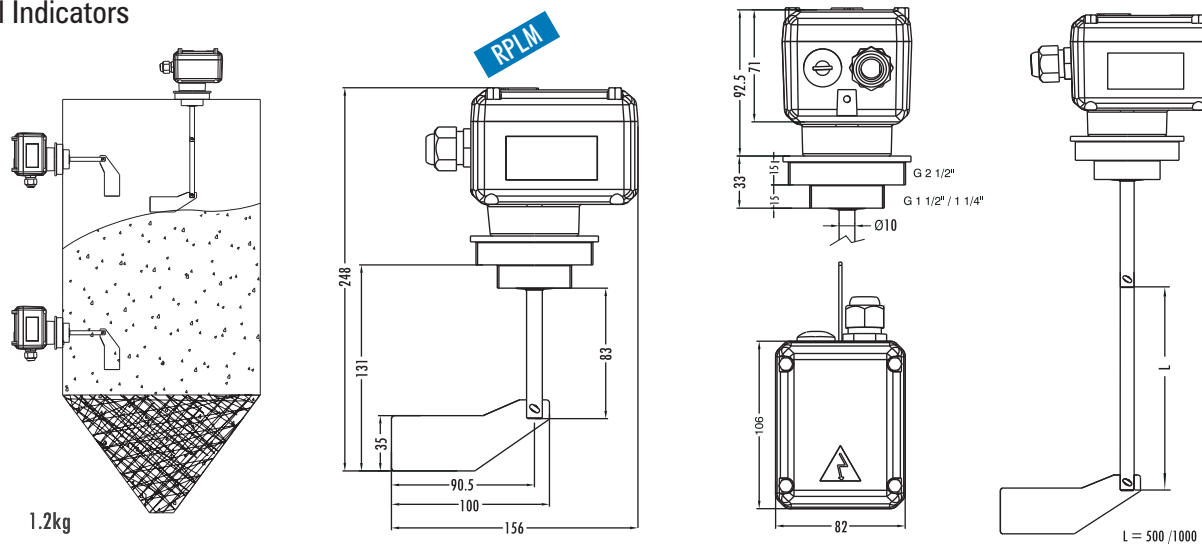
- Container excess pressure: max. 0. 8 bar
- Temperature inside vessel : -20 to 80° C
- Ambient temperature inside casing : -20 to 70° C
- Enclosure : IP 65
- Process connection : Thread G1 1/4", G1 1/2", G2 1/2"
- measuring vane: Stainless Steel
- Friction clutch: Protection of the gearing from impact
- Pickup delay: Approx. 1.3 sec
- Sensitivity: Adjustable via reset force
- Speed of measuring vane: 1 r.p.m.



## How To Order

RPLM	C	0
Type	Voltage	Connect
Rotary Paddle Level Meter	C: 115V/220 AC 50-60Hz A: 24V/48V AC 50-60Hz D: 24V DC	Threaded 0: 1 1/2 - 2 1/2 2: 1 1/4 NPT 5: Flanged A: Triple palette

## Level Indicators

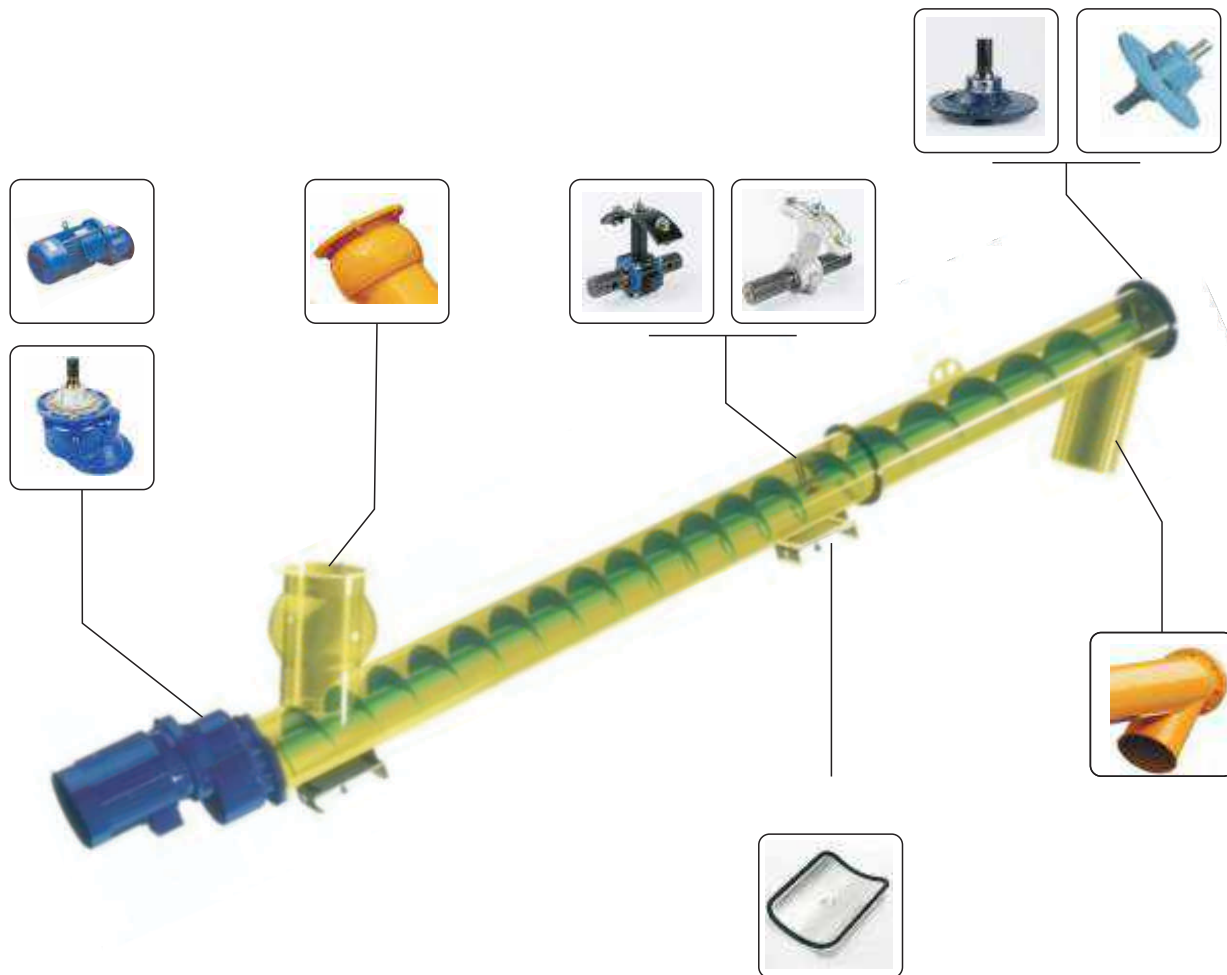


Part #	Stem Material	Mains voltage	Signal output	Installed load	Connection terminal	Process connection
RPLM	Stainless Steel	24 V - DC	DC max. 300 V, 2 A, 60 W	3VA (3W)	1 x max. 1.5 mm <sup>2</sup>	1½" - 2½" NPT

Dimensions in mm



Tubular screw conveyors can be used to high price / performance ratio with the use of various accessories. The products adopt standardized design and automatic production, and have been widely used in industries such as concrete mixing station, dry powder sand mixing station and asphalt mixing station.



114	=	6.5T/h	→	6T/h
168	=	25T/h	→	20T/h
219	=	70T/h	→	55T/h
273	=	100T/h	→	75T/h
323	=	125T/h	→	95T/h
406	=	160T/h	→	120T/h



### OUTLET END BEARING ASSEMBLY ACS EB Series

ACS EB series of export terminal support assembly is an indispensable connector in the screw feeder, is used for spiral tail support blade spindle.

#### Outlet End Bearing Assembly

### ACS EB

Code

A C S E B 0 0 A C S C A

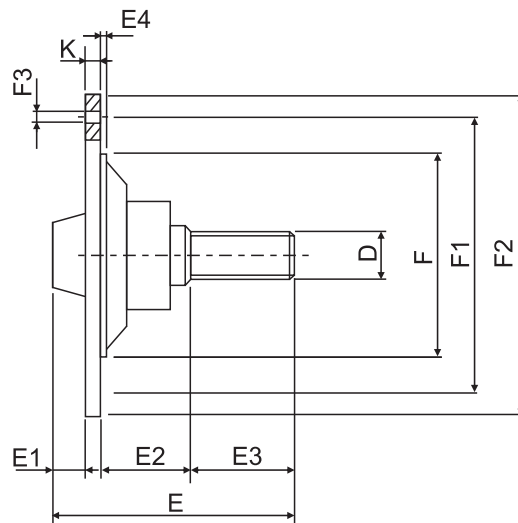
Ø Feeder

1= Ø 168  
2= Ø 193  
3= Ø 219  
4= Ø 273  
5= Ø 323



### OUTLET END BEARING

ACS EB



#### CONNECTION SIZE

Code	Ø Feeder	DIN 5482 ØD	E	E1	E2	E3	E4	ØF	ØF1	ØF2	F3		K	KG	Bearing
											Ø	N <sup>a</sup>			
ACS EB 168	168	40X36	197.5	32	72.5	85	3	162	220	250	M10	8	14	7	6008-2RS
ACS EB 193	193	40X36	197.5	32	72.5	85	3	186	220	250	M10	8	14	7	6008-2RS
ACS EB 219	219	40X36	197.5	32	72.5	85	3	210	250	275	M10	8	15	7.5	6008 2RS
ACS EB 273	273	40X36	197.5	32	72.5	85	3	265	305	330	M10	8	15	9.5	6008-2RS
ACS EB 323	323	40X36	197.5	26	72.5	85	4	315	370	405	M10	8	15	15	6008-2RS

Dimensions in mm

## Screw Conveyor Accessories

### Intermediate Hanger Bearing ACSC H Series

ACSC H series of intermediate shaft is screw feeder hanging essential connection is with self-lubricating liner hanger.



## ACSC H

### Performance & Technical Features - Benefits

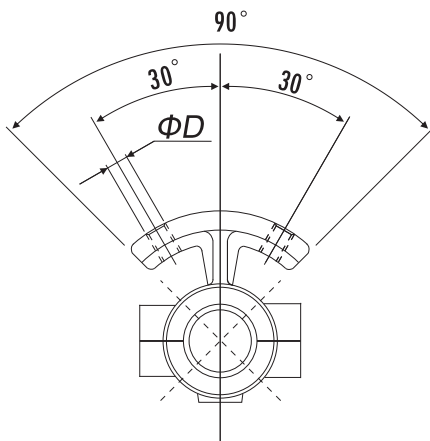
- Material : Aluminum alloy
- Suitable for cement, lime and similar powders



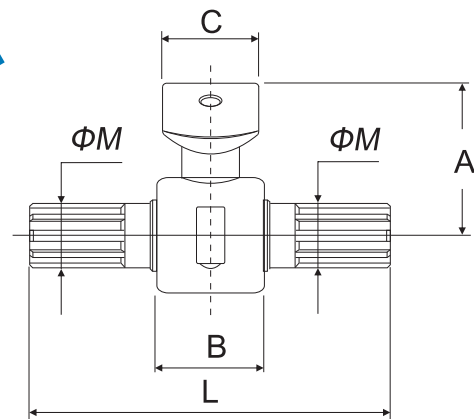
### Code

A C S C 0 4 0 B

Ø Shaft	Ø Feeder
040=Ø 40mm	15= Ø 168 17= Ø 193 20= Ø 219 25= Ø 273 30= Ø 323



ACSC H



FOR: ACSC H Screw conveyor

### CONNECTION SIZE

Part #	Φ Shaft	Φ Feeder	A	B	C	D	M DIN 5482	L	Kg
ACSC H 168	40	ACSC 168	80	55	51	M14	40x36	245	3.5
ACSC H 193	40	ACSC 193	92.5	55	51	M14	40x36	245	3.5
ACSC H 219	40	ACSC 219	105.5	55	51	M14	40x36	245	3.9
ACSC H 273	40	ACSC 273	132.5	55	51	M14	40x36	245	4.5
ACSC H 323	40	ACSC 323	157.5	55	51	M14	40x36	245	5.0

Dimensions in mm

### Intermediate Hanger Bearing ACS FH Series

ACS FH series of intermediate shaft is screw feeder hanging essential connection is with self-lubricating liner hanger.



### ACS FH

#### Performance & Technical Features - Benefits

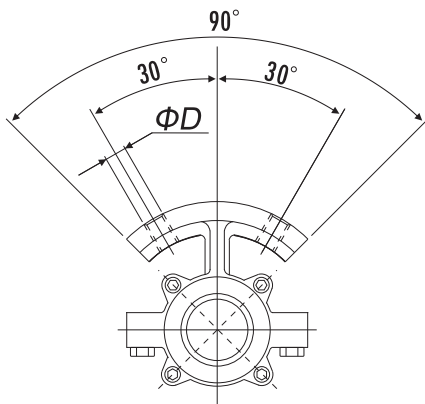
- Material: carbon steel
- Suitable for cement, lime and similar powders



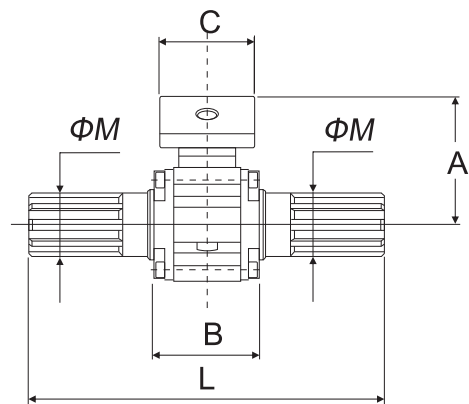
#### Code

A C S F H 0 4 5 B

Ø Shaft	Ø Feeder
045= Ø45mm	15= Ø168      25= Ø273
060= Ø60mm	20= Ø219      30= Ø323
	35= Ø406



ACS FH



FOR: ACS FH Screw conveyor

#### CONNECTION SIZE

Part #	Φ Shaft	Φ Feeder	A	B	C	D	M DIN 5482	L	Kg
ACS FH 219	45	ACS F 219	105.5	75	62	M14	40x36	225	4.5
ACS FH 273	45	ACS F 273	132.5	75	62	M14	40x36	225	4.7
ACS FH 323	45	ACS F 323	157.5	75	62	M14	40x36	225	5.0
ACS FH 406	60	ACS F 406	197.0	75	60	M20	60x55	295	14.0

Dimensions in mm

### Vibrator Round Filter

#### ACS G/ DCV Groung Mounted Vibratory Type Dust Collector Filter



#### ACS G/DCV

ACS G/DCV is engineered to suit venting of pneumatically filled silos. This cylindrically shaped stainless steel body contains vertically mounted pleated PE cartridge elements.

Dust gets separated from the air stream once it passes through cartridges and drops back into the hopper due to the vibrating cleaning device.

#### 1.1 OPERATING CONDITIONS

These filters are designed to work under following conditions: Dirty air flow temp. - 20 deg. to 80 deg. C.

Maximum static pressure suitable for filter body -500 mm H<sub>2</sub>O to + 750 mm H<sub>2</sub>O

The equipment is not designed to operate in hazardous conditions and for dangerous, explosive, toxic, flammable and any other harmful materials.

The connections with the mains supply should be carried out by qualified personnel. Before connections, ensure that plate data and voltage supply match.

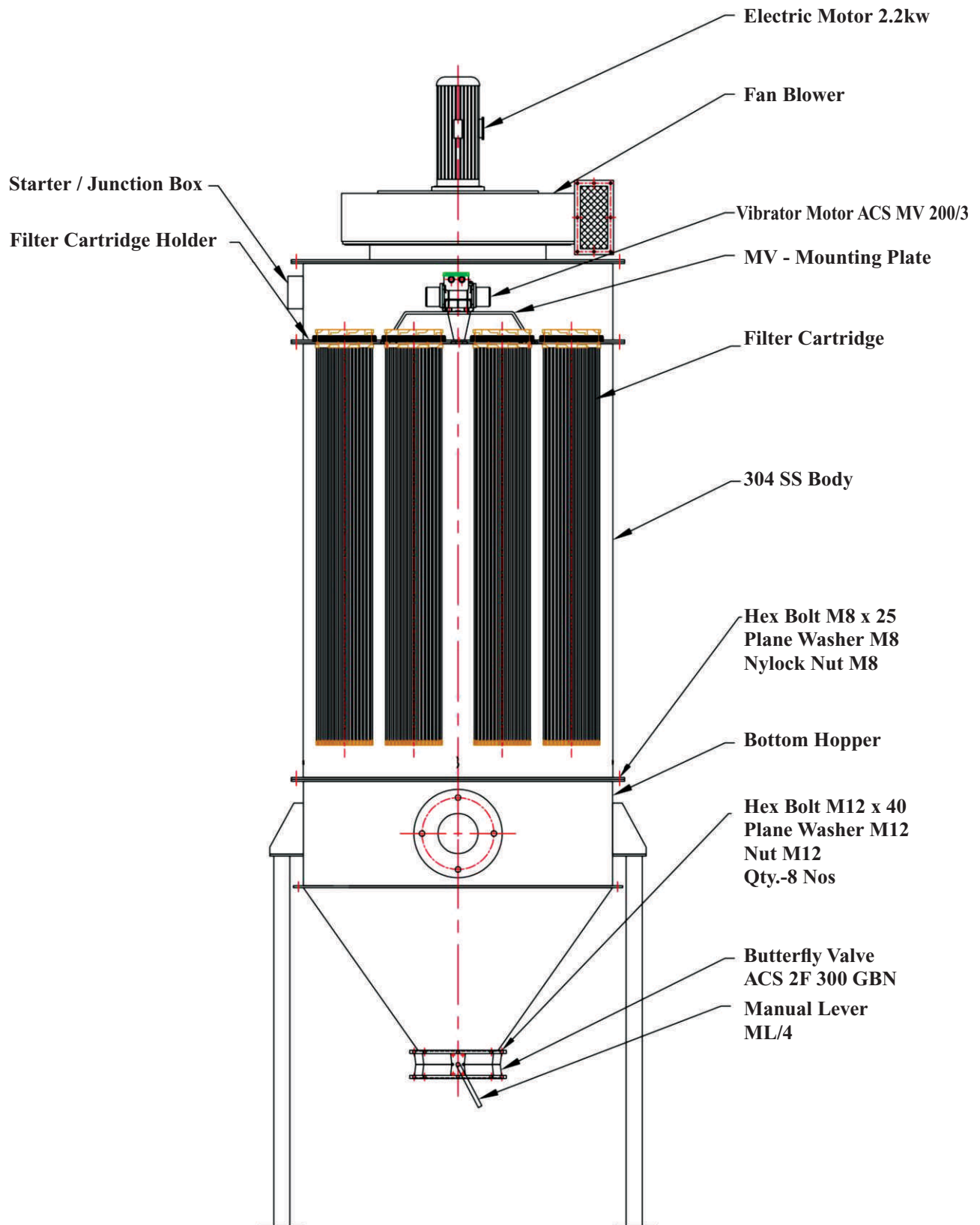
Carry out a correct grounding of the filter components by connecting the earth wires and ensure that the filter is well mounted onto the supporting structure ( hopper, silo etc.) which must be equally grounded according to industrial standards.

Before carrying out maintenance jobs. ensure that the filter is disconnected from mains.

Before starting, make sure all protections are installed correctly.

ACS SYSTEMS declines any responsibility for damages to things or people caused by the absence of such accident prevention devices.

### COMPOSITION AND GENERAL DIMENSIONS



## Screw Conveyor Accessories

### Inspection Hatch

Inspection hatches are provided on standard feeders beneath the first inlet spout, as well as beneath each intermediate bearing. The convenient maintenance.



### ACS IH

#### Performance & Technical Features - Benefits

- Suitable for 168/219/273/323 screw conveyor
- With an elastic sealing strip
- With a fixed link



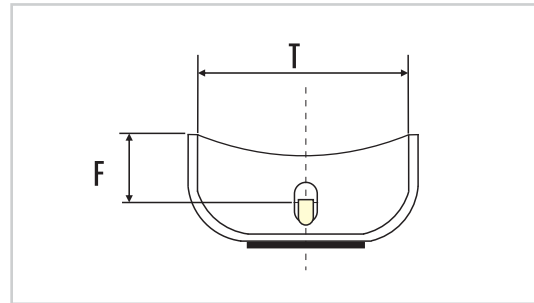
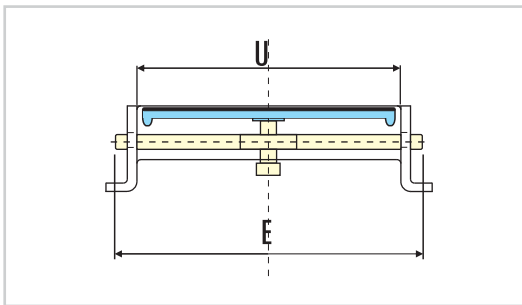
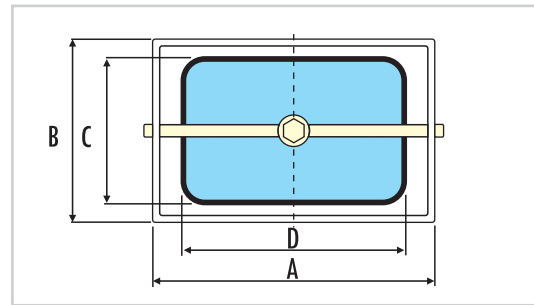
Code

A C S I H

Ø Feeder

Ø168 Ø 273  
Ø219 Ø 323

ACS IH



#### CONNECTION SIZE

Code	Ø Feeder	A	B	C	D	E	F	T	U	Kg
ACS IH 168	168	274	150	144	265	300	71.0	181	267	3.5
ACS IH 219	219		187	180						3.5
ACS IH 273	273		212	205						3.5
ACS IH 323	323		236	230						3.5

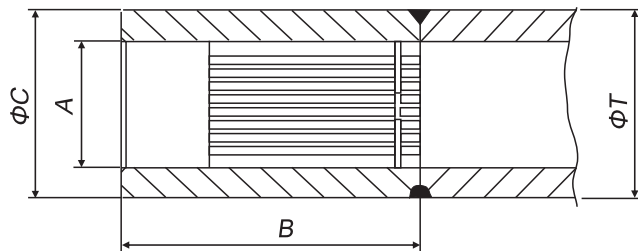
Dimensions in mm

### Shaft Couplings

ACS SC spline sets are welded to the ends of the inner tube for the connection of the screw blades. Suitable for 219/273/323 screw

#### Shaft Couplings

#### ACS SC



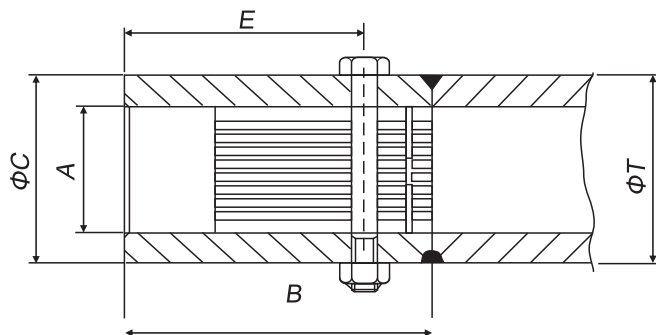
ACS SC



Part #	Φ Feeder	Number of teeth	A	B	C	T	Kg
ACS SC 20	168 193 219 273 323	20	40X36	92	60	60	1.2

#### Shaft Couplings

#### ACS SCH



ACS SCH



### CONNECTION SIZE

Part #	Φ Feeder	Number of teeth	A	B	C	E	T	Kg
ACS SCH 20	168 193 219 273 323	20	40X36	92	60	35	60	1.2



## Bulk Solids Handling Equipment

### Description and Technical Characteristics

#### ACS V2 Silo Venting Filters

ACS V2 is a cylindrically shaped dust collector for venting of pneumatically filled silos. The stainless steel body contains vertically mounted, filter elements. The air jet cleaning system is integrated in the hinged weather protection cover.

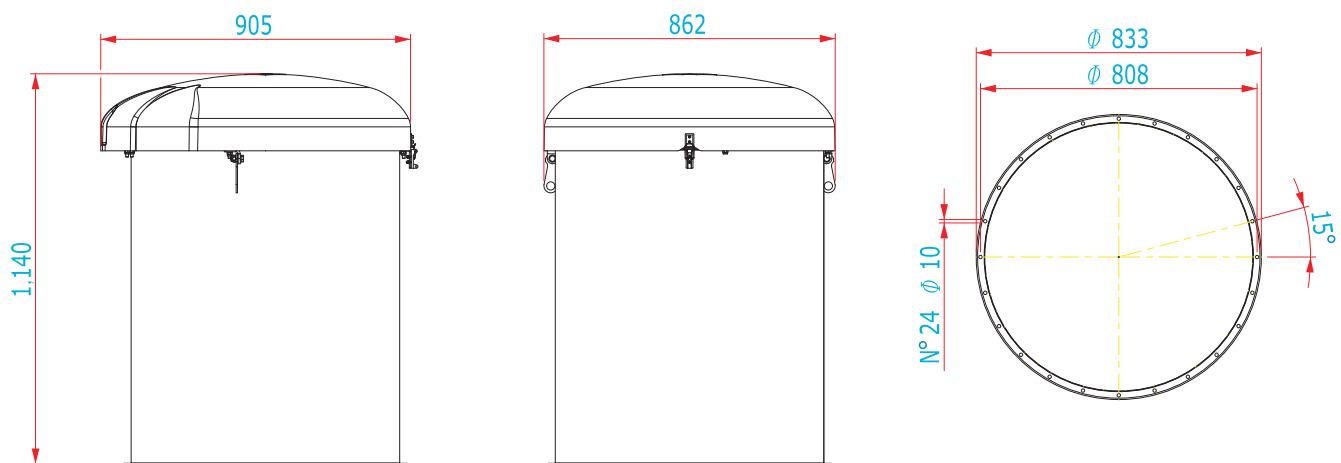
#### Silo Venting Filters

### ACS V2



Feature –	Function –	–
Standard Stainless Steel Body	Resistance to Corrosion	Reduced Maintenance Costs Due to Increased Durability
High Quality Filter Media	High Filtration Efficiency	Lower Dust Emission
Push-Fit Filter Elements	No tools for cartridge maintenance needed (no loss of hardware)	Lower Maintenance Costs
Maintenance Height = 1,150mm (3.8 ft)	Easy Maintenance	Increased Work Safety - Reduced Maintenance Costs
Easy opening system with hinged cover	Easy Maintenance	Reduced Maintenance Costs

#### Overall Dimensions



#### Overall Dimensions

CODE	BODY Ø mm [in]	FILTER SURFACE m <sup>2</sup> [sq ft]	MAX. HEIGHT WHEN CLOSED mm [in]	MAX. HEIGHT WHEN OPEN mm [in]	WEIGHT kg [lb]
ACS V2	800 [31.5]	24 [147]	1,140 [44.9]	1,825 [71.8]	120 [264]

Dimensions in mm

Dimensions in mm

### ACS V2 Filter Elements

Folding filter using PET polyester fiber, has good rigidity, the thickness of the filter cloth is only 0.2 mm, surface filtering performance is outstanding, the pressure loss is small, easy cleaning, long service life, filter made of high strength plastic internal skeleton, and folded filter cloth cast into an organic whole, have good integrity and seal performance, folding filter with 900 mm and 750 mm length.

### Venting Filters

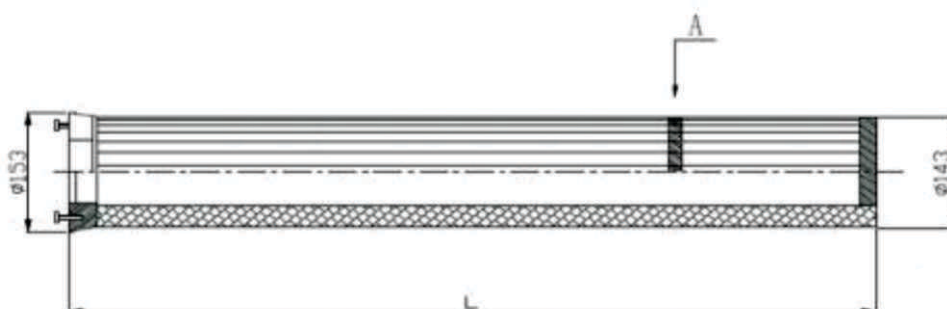
#### ACS V2

The main component of the filter is the filter element. They are made of polyester fiber and are made of inner cylindrical metal frame. Various types of filter media are very suitable. The outer diameter of the cylindrical filter element is about 140mm, and the length depends on the filter area (see table below.)

Folding filter characteristics: effective filter area per unit volume is very big, is 4 times the left and right sides of bag filter circle (as shown in the figure below) : so as to greatly reduce the volume of a dust collector, reduce the cost of equipment, installation and maintenance more convenient also. The folding filter is widely used, but it is not suitable for some special powder materials.

Filtering material	PP FP	PV FV	PA FA	PT FT
Material handling	Teflon coating.		Anti-static	Polytetrafluoroethylene film.
Should be used	General powder	Wet or oily powder.	It needs to be de-static.	A special powder.

### Overall Dimensions



### Overall Dimensions

Ø (mm)	BODY Ø mm	FILTER SURFACE m <sup>2</sup>	FILTER MEDIUM	FILTER THE NUMBER	LENGTH (mm)
Dust Collector	143	22	PP-PV-PA-PT	14	900

Dimensions in mm

## Description and Technical Characteristics

### ACS BR - Accessories - Bottom Ring

#### BOTTOM RING

Used to connect the filter with a hopper, silo etc.  
This connection is made by welding

#### FINISHING:

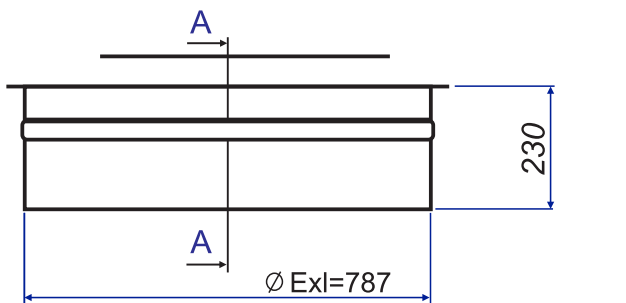
- Carbon steel powder-coated RAL 7001 (silver grey)
- AISI 304 stainless steel

#### Bottom ring

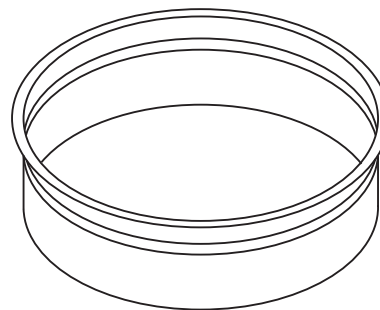
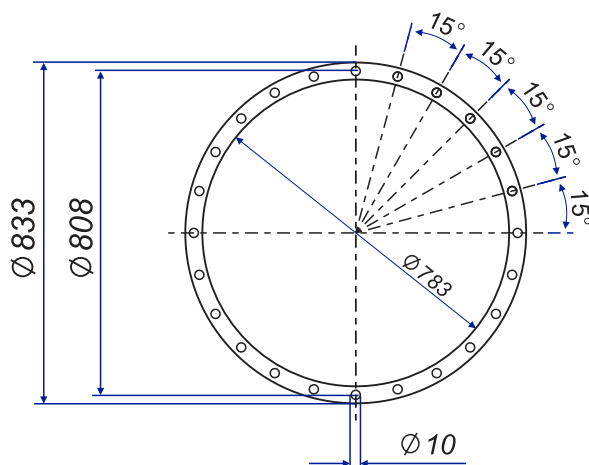
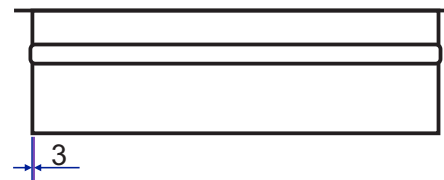
### ACS BR

#### Code

ACS BR	800	1
Type	Specification	Material
ACS BR	800mm	1: Carbon steel 2: AISI 304



SEZ.A-A



Dimensions in mm

### ACS AP21 Series Vibrating Bin Aerators

ACS AP21 and 44vibratory bowl for help gas flow to improve the bulk material

#### Bin Aerators ACS AP21

##### Performance & Technical Features - Benefits

- Sturdy design Self-cleaning Abrasion-resistant Easy to install
- Air pressure 2 to 4 bar (29 to 58 PSI)
- Working temperature 43-44 -40° C to 230° C (-40° F to 450° F)
- For powders and granular products Food-grade (FDA-approved)

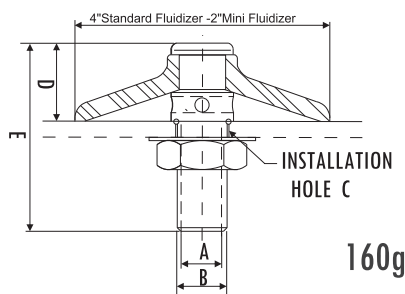
##### Options & Accessories

- With stainless steel shaft
- For external assembly
- Miniature execution

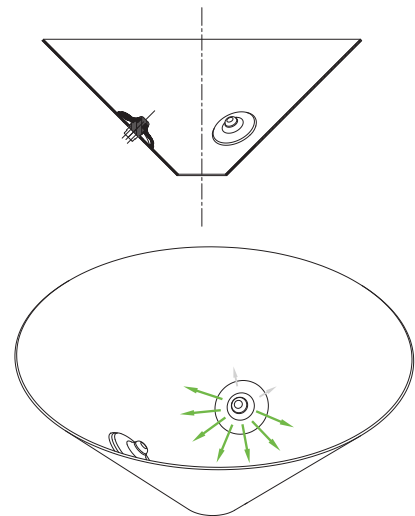


#### How To Order

ACS AP21	3	02
Type	Thread	Shaft
ACS AP21	3= 1/2	Stainless steel



160g



Part #	Stem Material	Disk Color	Disk Material	A	B	C	D	E	Airline Options
ACS AP21	Stainless Steel	White	Silicone	1/2" NPT	3/4" NPT	1 1/16" (27mm)	1-1/4" (32mm)	3 1/16" (78mm)	1/2" 3/4" (13-19mm) Tubing or Hose

The work broken arch recommended intermittent operation, such as using open 2-3 seconds, stop for 10-15 seconds, different pressures and under different working intermittently broken arch device will produce different effects of aid flows.

Series	Air consumption							MAX.
	0.5bar(7.2psi)	1bar(14.5psi)	1.5bar( 21.7 psi)	2bar(29psi)	3bar(43psi)	3.5 bar( 50.7 psi)	4bar(58psi)	
	m <sup>3</sup> /h	m <sup>3</sup> /h	m <sup>3</sup> /h	m <sup>3</sup> /h	m <sup>3</sup> /h	m <sup>3</sup> /h	m <sup>3</sup> /h	
ACS AP21	23	46	70					

Dimensions in mm

## Electric Motovibrators

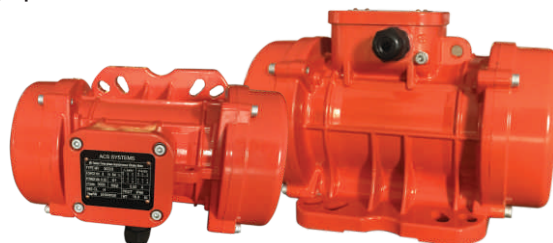
### Electric vibrators ACS MV-series

ACS MV series single, three phase standard vibration motor is a universal excitation source for all kinds of vibration machinery. This product can be widely used in mining, metallurgy, coal, electric power, construction, chemical, casting, light industry food and other industries.

ACS MV series single, three phase standard vibration motor has the characteristics of light weight, small volume, convenient excitation force adjustment, high insulation level and high protection level.

### Electric Motovibrators

## ACS MV



### Technical parameters of ACS MV series vibrating motor:

Rated voltage: 380V (three-phase)

Insulation level: class H, level F

Working system: continuous (S1)

(also available for 23/400v, 23/460v)

Rated frequency: 50HZ (also available for 60HZ)

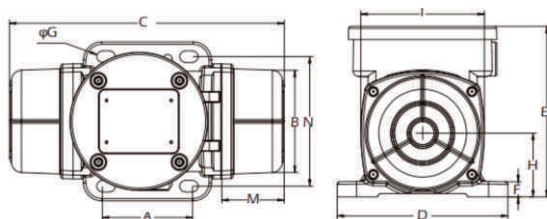
Protection level: Ip65

Vibration adjustment range: 0 - maximum

Three phase 0---13000kg

### Code

ACS MV	200	/ 3	M
Type	Force (kg)	Speed (r/min)	Voltage
ACS MV	60-516	3 : 3000	BLANK : Three phase 380V



### Mounting Dimension Unit : mm

Model	A	B	ØG	C	D	E	F	H	I	L	M	N	Cable gland	Fig
ACS MV60/3	62-74	106	6	211	130	136	12	48	94	121	45	86	M16×1.5	A
ACS MV100/3	33	83-102	7	221	130	136	12	48	94	121	50	86	M16×1.5	A
ACS MV200/3	62-74	106	6	231	131	159	15	64	121	123	54	112	M20×1.5	B
ACS MV300/3	80	110	11	253	155	175	15	79	142	163	45	131	M20×1.5	C
ACS MV400/3	90	125	11	273	155	175	15	79	142	163	55	131	M20×1.5	C
ACS MV500/3	124	110	11	273	155	175	15	79	142	163	55	131	M20×1.5	C
ACS MV500/3	135	115	11	334	168	196	22	92	169	178	78	158	M20×1.5	D

Model	Voltage	Current	Input power	Force	Weight	Size
	[V]	A.Max(Y)	[KW]	[KN]	[KG]	
ACS MV60/3	220/380	0.16	0.08	0.7	4.6	size 10
ACS MV100/3	220/380	0.19	0.1	1	4.7	size 10
ACS MV200/3	220/380	0.35	0.18	2	6.3	size 20
ACS MV300/3	220/380	0.52	0.27	3	9.9	size 30
ACS MV400/3	220/380	0.58	0.3	4	10.2	size 30
ACS MV500/3	220/380	0.96	0.5	5	16.7	size 40

Dimensions in mm